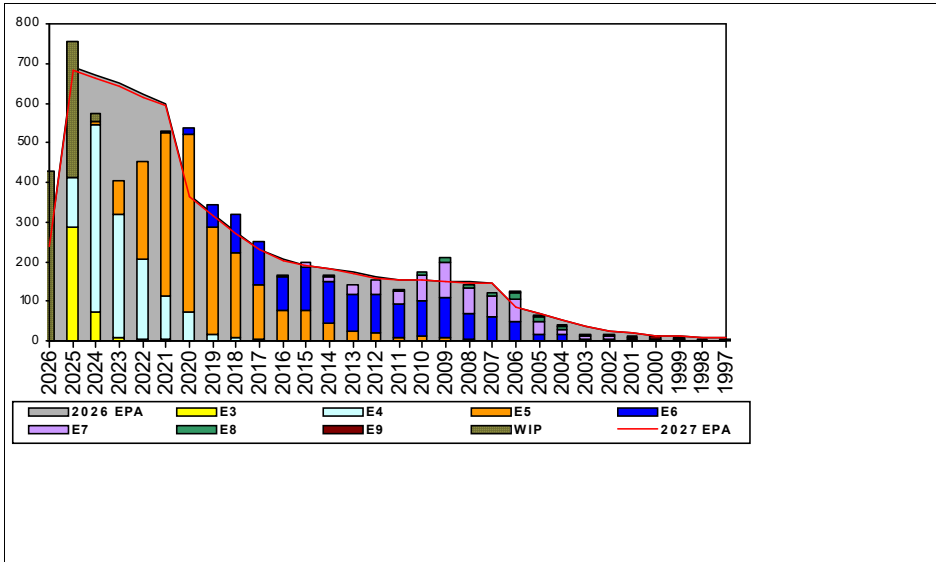


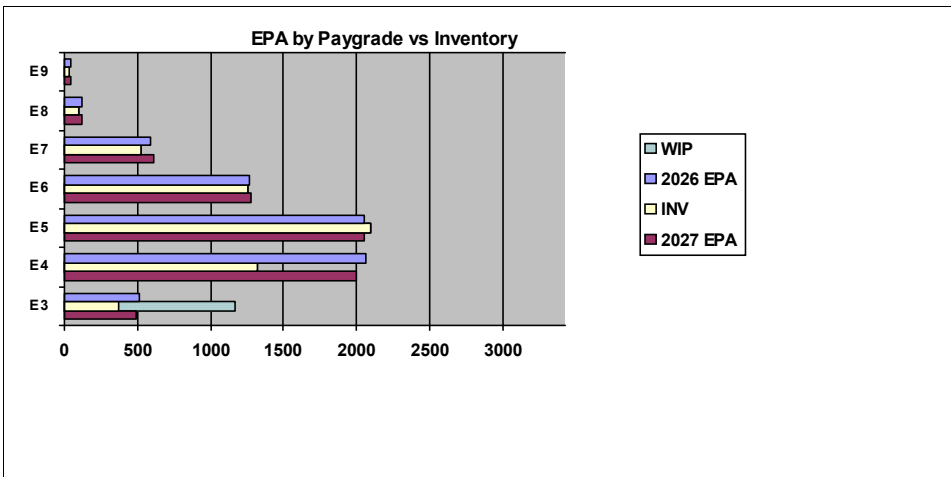
# Electronics Technician - B420



Sea Shore Flow		
TOUR	SEA	SHORE
1ST	54	36
2ND	48	36
3RD	36	36
4TH	36	36
5TH	36	36
6TH	36	36
7TH	36	36

FORCE STRUCTURE MANNING TO BA										
PG	SEA	INV	BA	SHORE	INV	BA	SEA + SHORE	TOTAL INV	TOTAL BA	
E1-3	400.0%	104	26	242.9%	17	7	366.7%	121	33	
E4	63.4%	1013	1598	59.2%	138	233	62.9%	1151	1831	
E5	109.8%	1253	1141	94.1%	703	747	103.6%	1956	1888	
E6	83.6%	576	689	109.9%	589	536	95.1%	1165	1225	
E7	86.1%	255	296	88.0%	241	274	87.0%	496	570	
E8	75.8%	50	66	76.4%	42	55	76.0%	92	121	
E9	83.3%	20	24	100.0%	18	18	90.5%	38	42	
<b>Total</b>	<b>85.2%</b>	<b>3271</b>	<b>3840</b>	<b>93.5%</b>	<b>1748</b>	<b>1870</b>	<b>87.9%</b>	<b>5019</b>	<b>5710</b>	

TIS to PG Years	Pay Grade	E1-E3	E4	E5	E6	E7	E8	E9
TIG to PG Years	ET	TIS	1.5	4.2	9.3	14.3	18.1	22.2
	ALL Navy	TIG	1.3	1.8	4.6	5.7	5.0	4.6
	ET	TIG	0.8	2.8	5.0	5.6	5.1	3.9



Zone Info	ZONE A	ZONE B	ZONE C	ZONE D	ZONE E	ALL ZONES
FY26 Manning:	77.0%	94.0%	91.0%	107.0%	75.0%	86.0%
FYTD RENL Rate:	62.9%	65.6%	74.7%	97.8%	26.8%	68.0%

## NOTES

Conversions: Submittal are 13-18 Months from PRD.  
 Retirements: Should match SEAOS/PRD or extraordinary circumstances.  
 SEM/BBA: These programs are advancement opportunities program not an advancement guarantee, apply early and often to stay competitive.  
 ECM/TECAD: ETCM Parsons, Seth A. "Casper"

	E1-3	E4	E5	E6	E7	E8	E9	TOTAL
% INV to FY26 EPA	73%	64%	102%	99%	88%	81%	90%	86%
EPA (FY26)	513	2065	2055	1267	594	120	42	6656
INVENTORY	375	1324	2093	1259	524	97	38	5710
EPA (FY27)	489	1993	2050	1280	610	116	41	6579
% INV to FY27 EPA	77%	66%	102%	98%	86%	84%	93%	87%
INV + WIP / FY26 EPA	227%							98%
INVENTORY	1167	792 ← E-3 and Below WIP						6502
INV + WIP / FY26 EPA	239%							99%